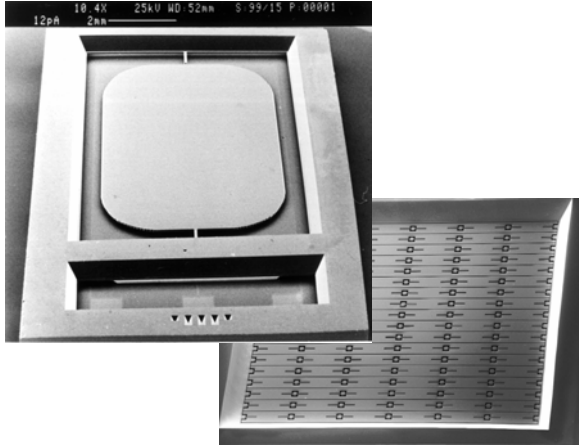


microscanner and mirror strip array



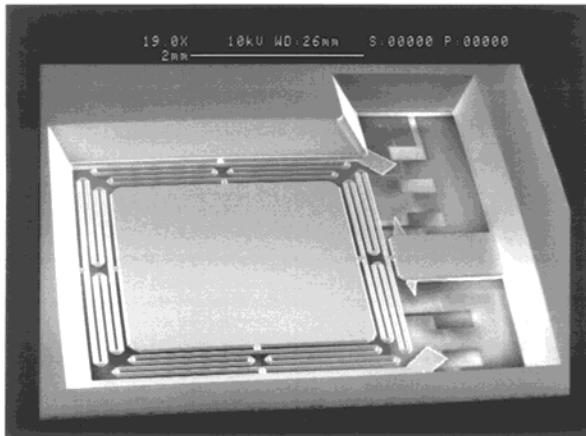
Microscanner and mirror strip array

Microscanner:

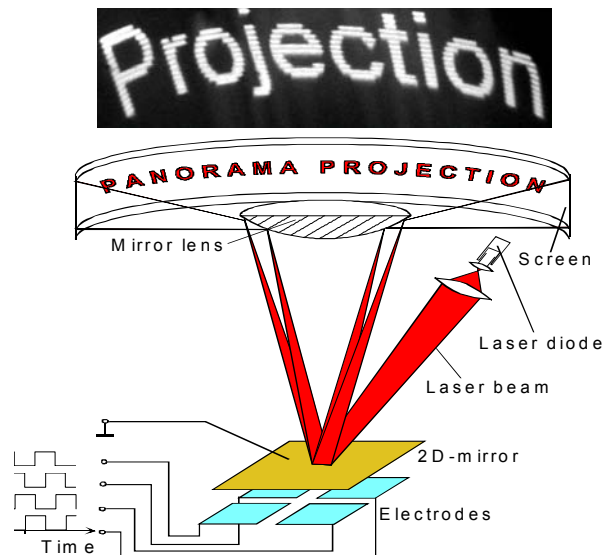
- > Mirror size: 6 x 9 mm²
- > Maximum tilt: 3 deg.
- > Scanning frequency: 500 Hz

Mirror strip array:

- > Strip size: 250 μm x 6 mm
- > Maximum tilt: 1.5 deg.
- > Scanning frequency: 25 kHz



2D micro mirror for the panorama projection



Scan unit

