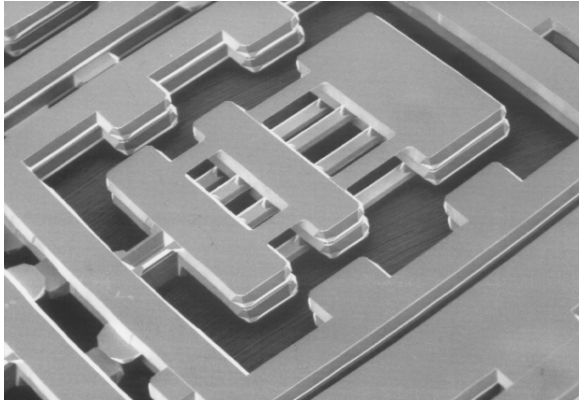


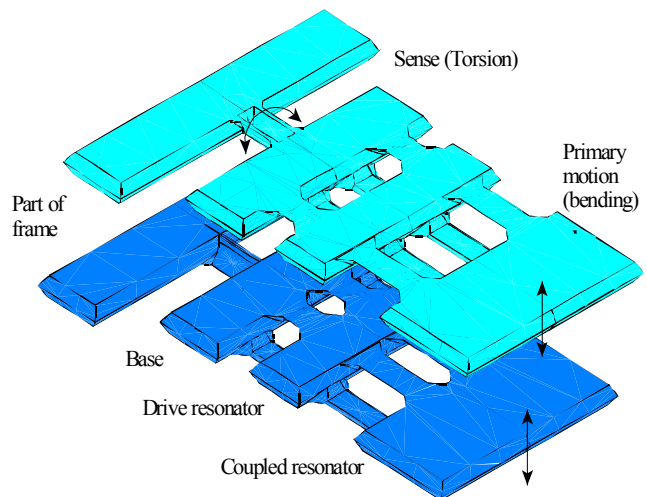
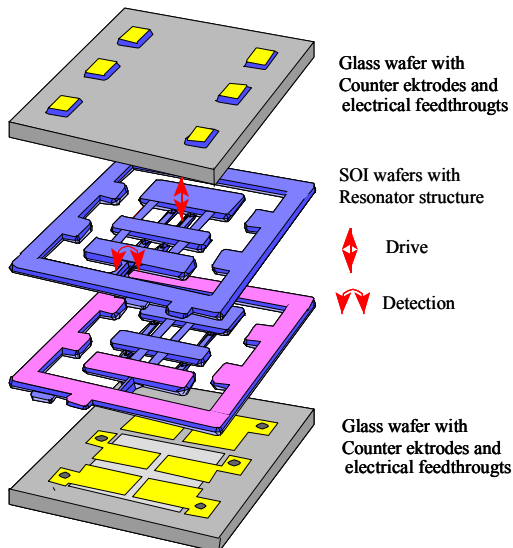
## angular rate sensor



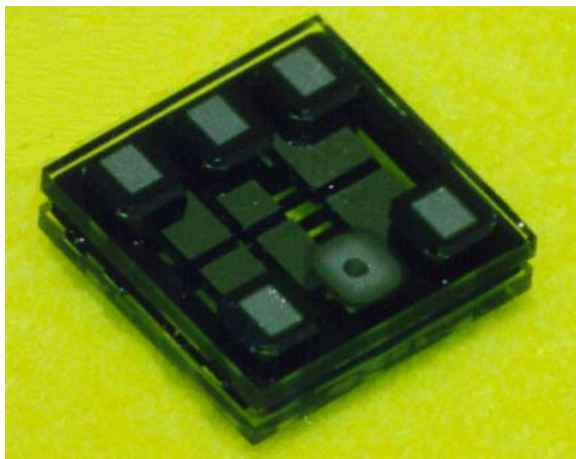
SEM picture of the wet etched and bonded tuning fork (working gaps 1 µm/20 µm)

### Technical Parameters:

- > Meas. range: 1000°/s
- > Accuracy: 1°/s ... 0,1°/s
- > Shock resist.: 1000g
- > Dimensions: 11mm x 11mm x 3,2mm



Multilayer design for electrostatic drive and capacitive detection



Complete sensor chip with side-wall contacts size (11 x 11 x 3,2) mm<sup>3</sup>

### Applications:

- > Navigation systems in aircrafts and missiles
- > Navigation systems in cars
- > ESP in cars