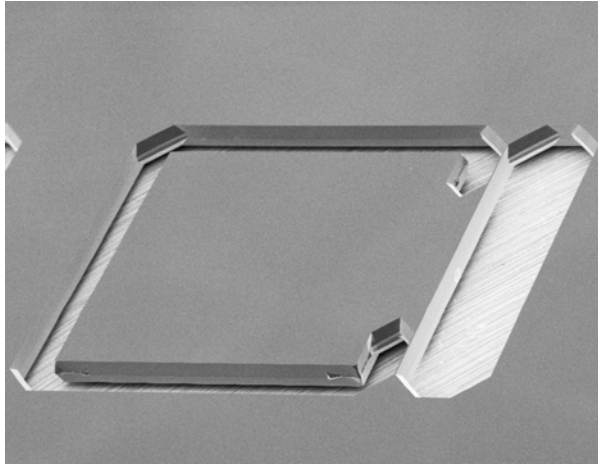


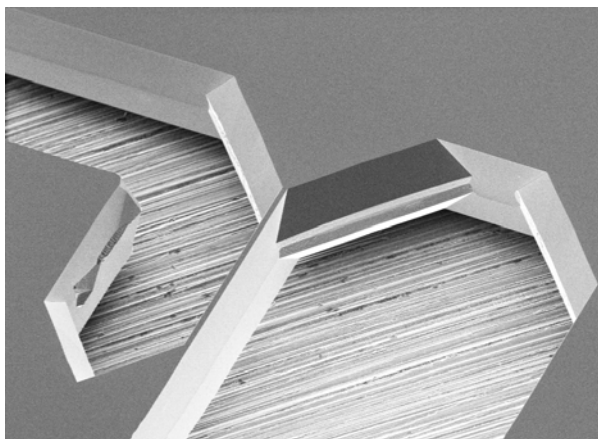
acceleration sensor



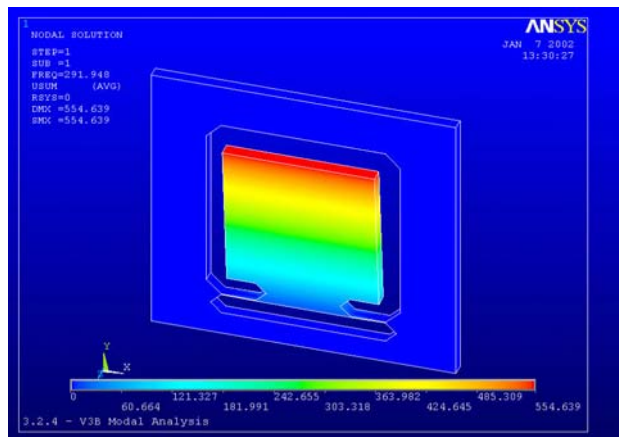
Si plate with novel perpendicular torsion springs

Technical Parameters:

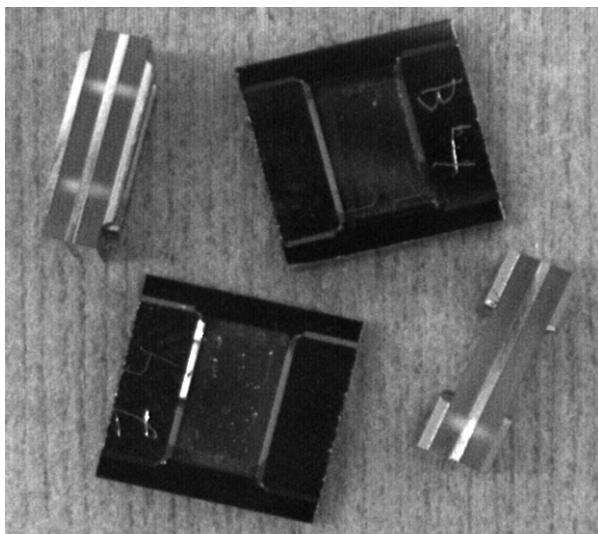
Measurement range:	8 g
Resolution:	500 μ g
Bias:	< 100 mg
Supply voltage:	5 V/27 V



SEM pictures of the springs



FEM-Simulation of eigenmodes



Sensor chips (7 mm x 7 mm x 2.1 mm)

Altitude and Heading Reference System (three fiber-optical gyros, three micromechanical acceleration sensors)

in co-operation with GEMAC GmbH